

3

Practical

Aim – To Use light & shade to achieve volume and depth in terms of perspective

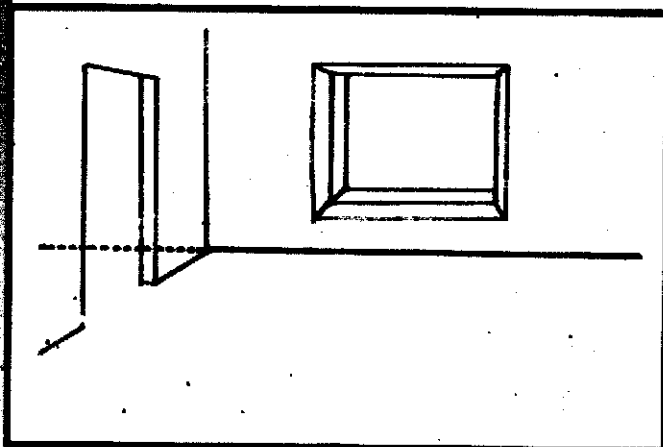
Objectives

On completion of this Practical, you will be able to:-

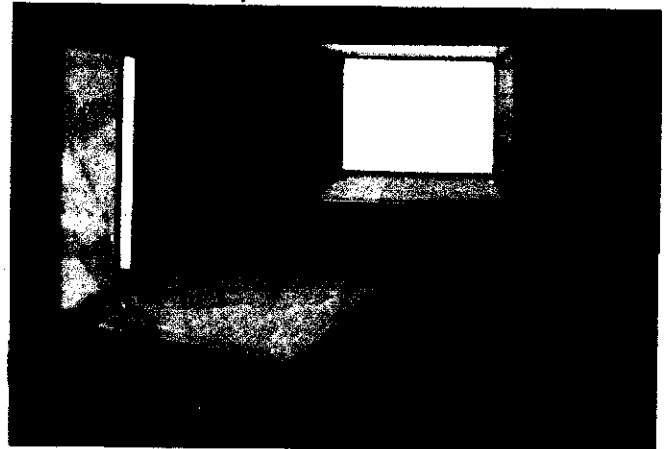
- Define foreground, background in the pictorial space
- Establish the distance between the objects.

Perspective

Divide the pictorial space to define the foreground and background by drawing a horizontal line.



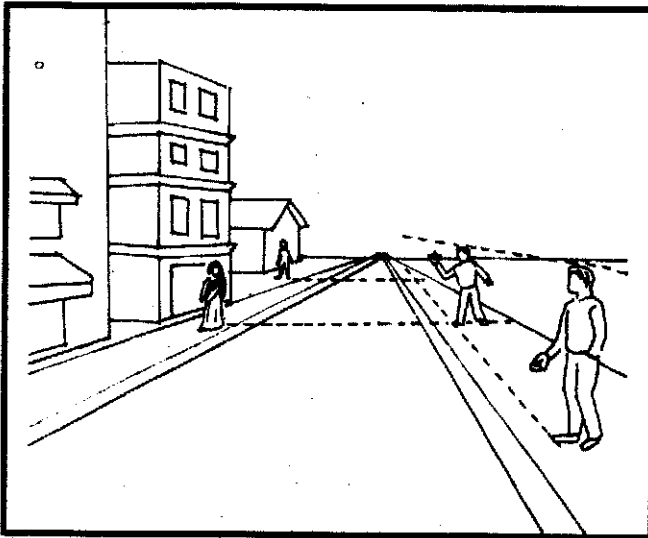
Foreground and Background



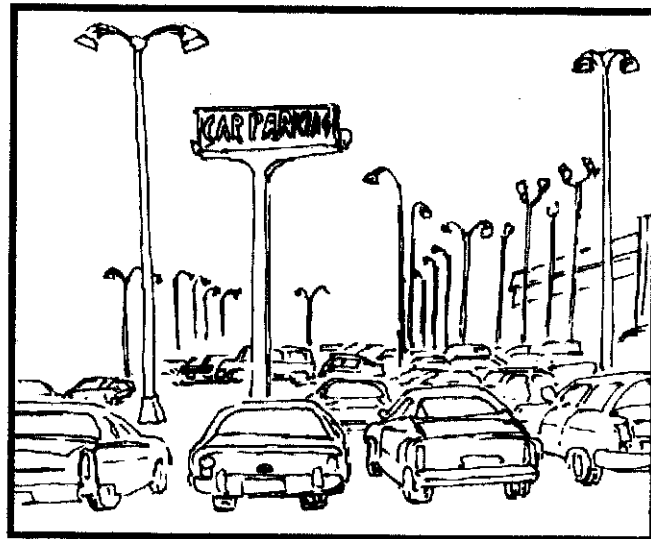
Perspective with warm and cool colours

Wall is the background and floor is the foreground.

- **The objects drawn in the picture at the bottom become bigger and same objects nearer to background appear smaller.**



Object bigger in foreground



Vertical lines shorter in the background

- **Colour :- perspective can be shown in terms of colour by using cool and warm colours of different tones.**



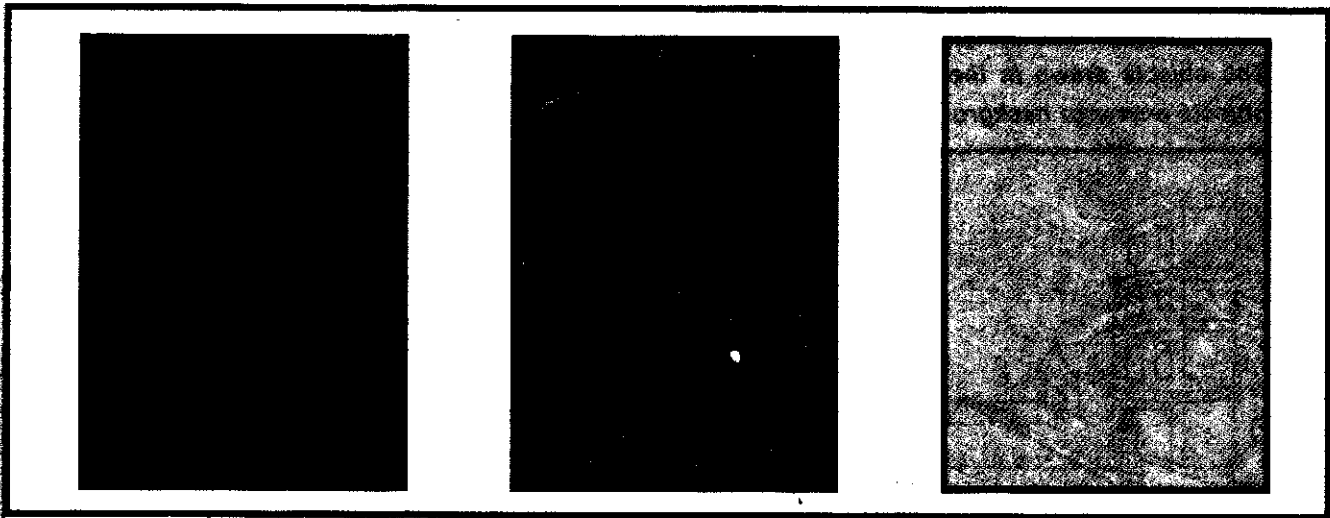
Perspective with warm colours



Parallel lines meet in the Horizon



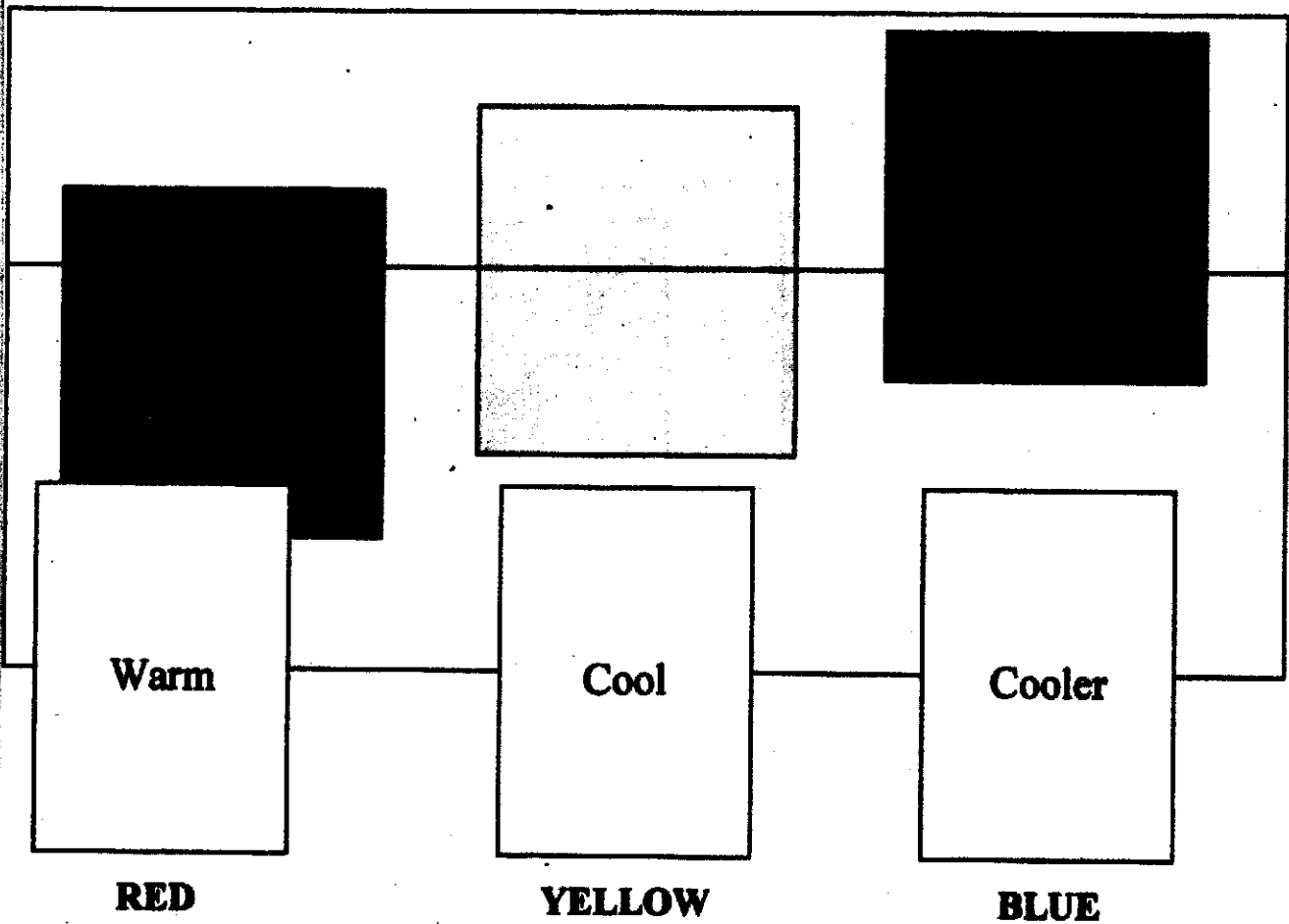
Perspective with cool colours



Red

light

lighter



Warm

Cool

Cooler

RED

YELLOW

BLUE

Study of shapes, manmade and natural objects, relation of proportion, light and shade, volume in terms of colours and perspective will be useful for further studies in composition.